

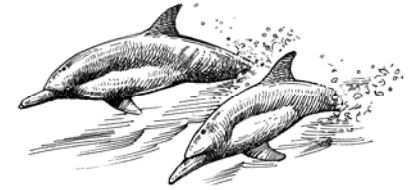
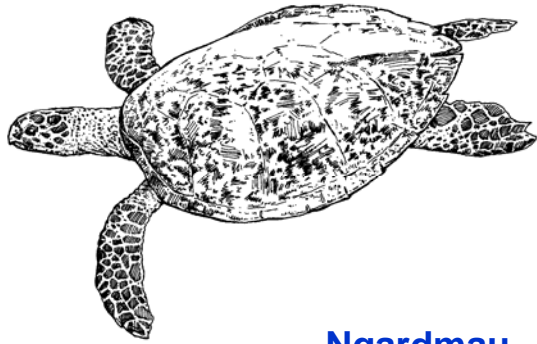
Protected Areas Network in Palau



Alma Ridep-Morris

Ministry of Resources & Development

22 protected areas



Ngeruangel

Northern Reef Channels *Bul* (8)

Ebiil CA

Ngardmau

- [Ngardmau Waterfall (Taki)]
- [Ngerchelchuus]
- Ngermasech CA

Ngaraard Mangrove

Ngemai Conservation

Ngaremeduu CA

Lake Ngardok Nature Reserve

Ngchesar

- Ngchesar Watershed CA
- Ngelukes CA

Rock Islands & Sthrn Lagoon Mgmt Area

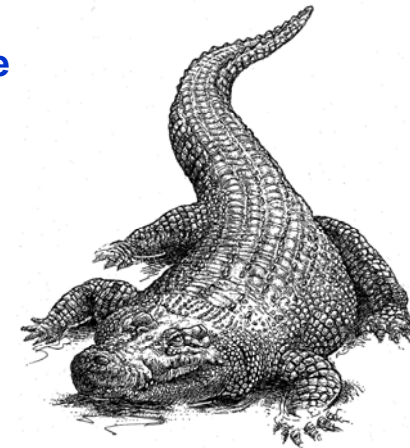
- Ngerumekaol (State & National)
- Ngerukewid Islands (State & National)
- Ngemelis & Dmasch
- Ngkisaol Sardine Sanctuary
- Ngederrak Reef

Airai Mangrove
CA's (2)

Helen



Tululeu CA



Ngaremeduu CA/BR



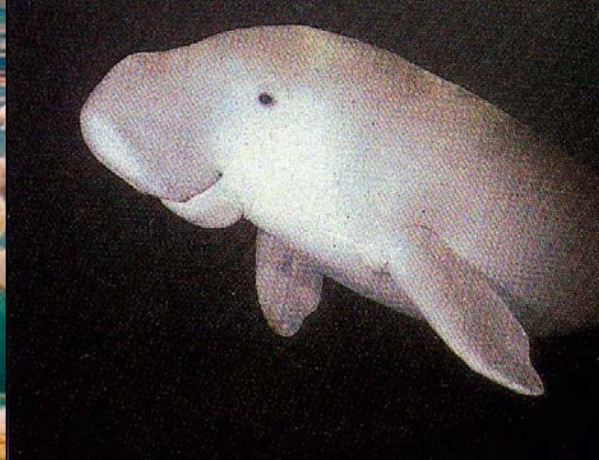
Rock Islands Southern Lagoon



Ngardok Nature Reserve



Rich Biodiversity



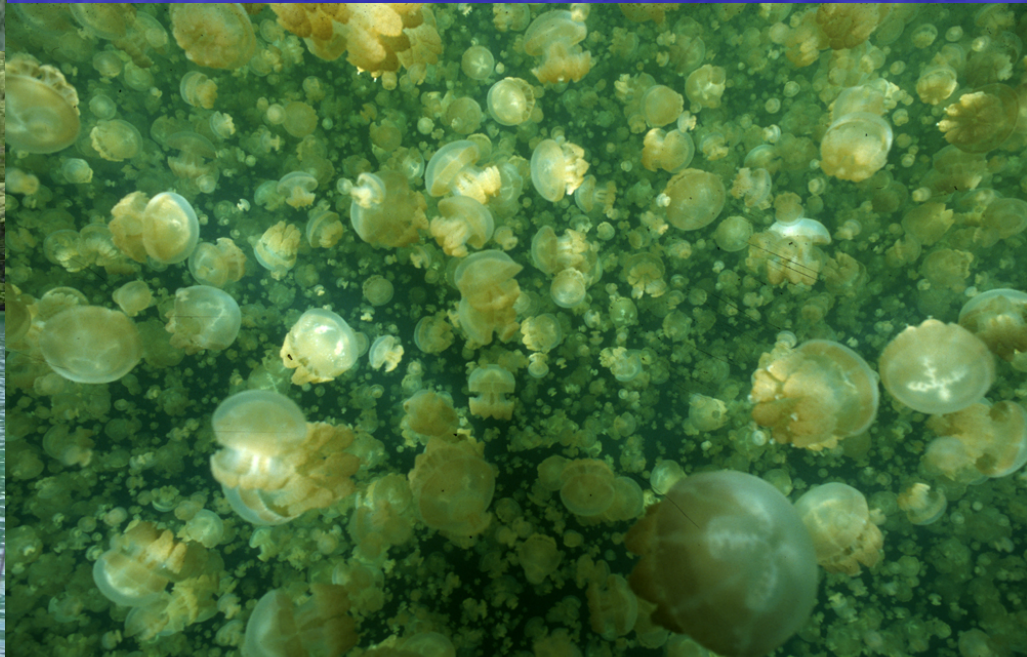
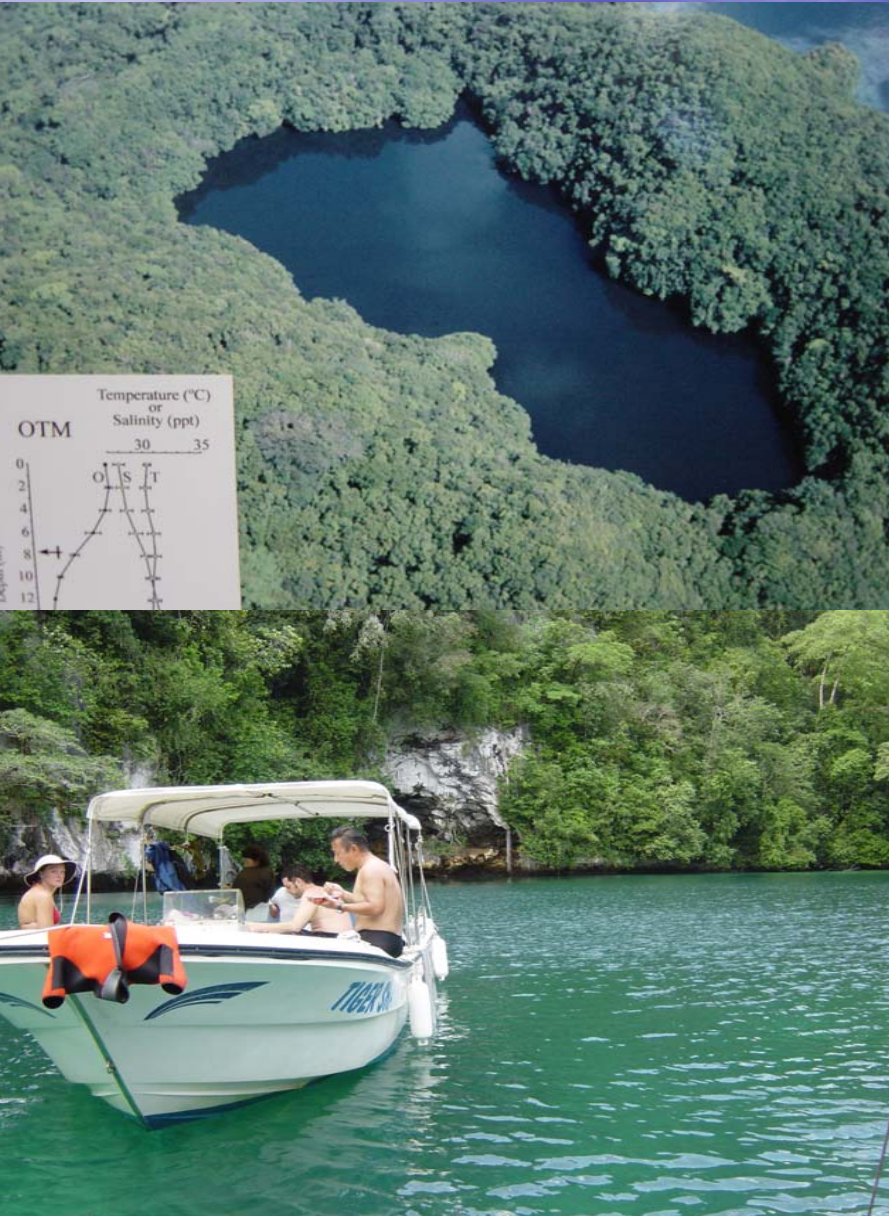
Protected Areas Network Act -Nov 2003

- National framework to support state and community level action.
- Dual purposes of the PAN Act:
 - Address local resource management needs
 - Protect nation-wide biodiversity, habitats & natural resources
- Includes marine & terrestrial areas
- Full range of protected areas options



Opportunities for PAN

- Supportive policies
- Effective management
- Strong science
- Sustainable finance



Sustainable Development



- Kayak tours
- Ecolodges
- Hikes to cultural sites



Opportunities for the Communities

- PAN designated sites will have enhanced prosecution abilities
- Enhanced access to technical assistance to build State capacity for natural resource management
- Improved participation in National level policy making
- Access to funds for management



Benefits for Palau



- National biodiversity is protected through an integrated, inter-state network (meeting of CBD obligations)
- Natural resources are managed to ensure sustainable use
- Development of a model approach for natural resource management and conservation of biodiversity that ensures State control with national support
- Access to international funds and technical support
- International recognition of Palau as a leader in conservation

Challenges

- Geographical spread of Protected Areas
- Securing Financial Sustainability
- Ensuring all States supporting PAN
- Development impacts (Compact Road, etc)



Lessons Learned

- Multiple stakeholders involvement in drafting framework legislations
- Flexibility throughout the whole process
- Raising awareness of decision-makers
- Important to have the support of a conservation champion
- It takes TIME, TIME, TIME.....



© Noah Idechong

Partnerships

- National Government (MRD, MOF)
- NGOs (TNC, PCS)
- States (communities)
- Others (PICRC, CRRF)



**Kid a dimlak denguu tial beluu
ra rucheled era irechar, Kede bai
meleng er ngii era rengeleked.**

**We do not inherit the earth from our ancestors,
We are borrowing it from our children.**

